

# RFID READER

Volume 1, Issue 3

May 2006

### May Events:

RFID Journal Live in Las Vegas: May 1-3

Infragard Conference in Fayetteville: May 17-18



### Inside this issue:

Temperature Monitoring	1
Slap and Ship Solution	1
RFID Journal Live	2
OAT Software in Lab	2
U of A RFID Website	2
Lab Count	2
Transit Enforcement RFID	3
Student Profile	3
Sponsors	4

To request a copy of this news-letter by mail or by email contact:

[rfid@walton.uark.edu](mailto:rfid@walton.uark.edu)

## Deloitte: Pallet Temperature Monitoring

Results from the use of KSW Microtec semi-passive RFID tags have shown significant insights into the distribution of fresh/frozen produce. The tags show the temperature difference pallet to pallet while the product is in the supply chain. Insights into the temperature of each pallet could have great impact on what does and does not get accepted after a shipment has been exposed to extreme temperatures. The knowledge gen-

erated can bring even more visibility into the supply chain and highlighted areas for improvement, making sure consumers consistently receive the best possible product in the best possible condition. The semi-passive temperature tags are being tested in a collaborative applied research initiative with Deloitte Consulting.



## University of Arkansas Conducting Company Training

The University of Arkansas is now hosting company training at the U of A RFID lab. Bring the RFID team from your company and have them get an in-depth overview of how your company's product performs in an RFID environment.

## IBM Slap and Ship Solution



IBM is introducing a hosted RFID interface to ease the implementation of RFID into small businesses. The hosted solution will be connected to an external (or internal) server which receives a UPC code and sends requests back to the computer in the form of an EPC. This information will be sent to a RFID printer (applicator) where tags are programmed and printed. Tags can then be easily applied to the product using the 'slap and ship' method. As the IBM software is not a hosted system there is no software involved and full training can be provided and completed easily by the user.

This system is available in the lab to demonstrate possible slap and ship solutions. However, slap and ship is a interim, short term tagging strategy. Companies are encouraged to examine how RFID can be used beyond slap and ship to obtain greater ROI.

## RFID Journal LIVE!

The RFID Journal Live conference and exhibition was held by RFID Journal, and took place on May 1-3 in Las Vegas Nevada at the MGM Grand. This annual event reaches out to people from interested businessmen using it in their business, to people looking for “best practices” of implementation. University of Arkansas RFID members attended this event to share their finding with improvements in the supply chain and to get up to date on the latest technology and newest equipment for the lab. The exhibition attracted retail, pharmaceutical, aerospace, manufacturing and logistics people from all over the world, making for a confluence of the RFID world.



## OATSoftware Installed in Lab

OATSystems Software, a company out of Waltham, Massachusetts, has become known for its RFID solutions programs and has teamed up with the University of Arkansas RFID Lab to provide a multi-dimensional data mining software program.

The software that was provided to the RFID Lab will be used for analysis of data from the testing of products in the lab. This analysis can be applied to data taken from conveyor, pallet, and dock door testing. This program will allow the lab to perform numerous tests and have the ability to prepare an in-depth analysis of the testing.

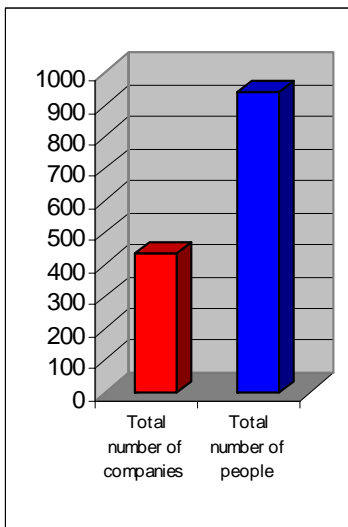


## Lab Count Update

Lab visitors as of April 30, 2006

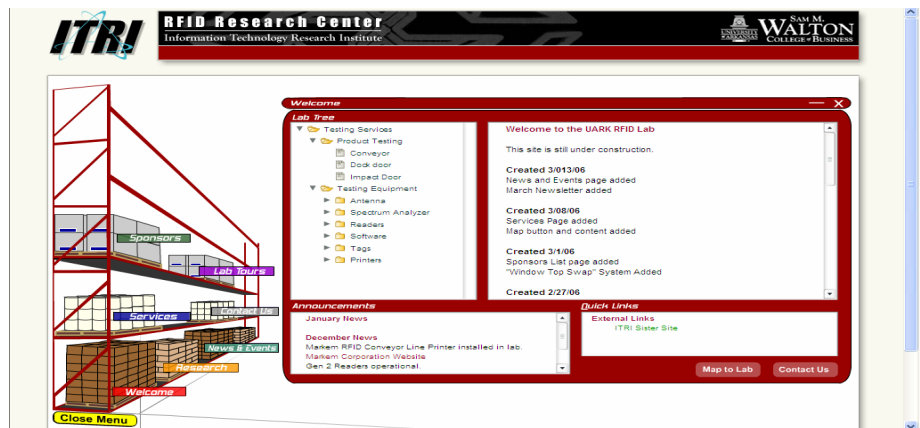
Total number of people: 938

Total number of companies: 435



## Lab Website Up and Running

Colby Backes, the lab software and data manager, has created a much needed website for the University RFID Research Center. The website includes everything from product and lab equipment used in testing, to the latest news from the lab and the research papers from studies conducted in the lab. Along with virtual lab tours, you can also find: maps to the lab, lab sponsors, and brief overviews of all the testing services provided. Student resumes can also be located on the website and downloaded along with student produced white papers. Visit the website at: [itri.uark.edu/rfid](http://itri.uark.edu/rfid)





**Sam M. Walton  
College of Business**

**RFID Research Center**

Director: Dr. Bill Hardgrave  
Phone: (479) 575-6099  
Email: bhardgrave@walton.uark.edu

**RFID Lab**

2700 S. Armstrong Road  
Dock 28  
Fayetteville, AR 72701  
Lab Manager: Justin Patton  
Phone: (479) 718-3650  
Cell: (479) 236-5890  
Email: jpatton@walton.uark.edu

<http://itri.uark.edu/rfid>

## Parking Enforcement Using RFID

This past academic year, undergraduate students from the Walton College and the College of Engineering collaborated on a business plan to implement an RFID solution for academic institutions' parking departments.

The students from the two colleges began working independently on similar projects during the fall semester of 2005. The Walton College students began the business conceptualization of the plan, while Engineering students approached the concept with the software requirements in mind. The teams converged after the Walton College students decided to pursue the Donald W. Reynold's Governor's Cup and met with Dr. Craig Thompson, the engineering students' senior project advisor.

The students felt that the reduced reliance on line of sight that RFID technology delivers in the retail world could benefit educational institutions' parking departments. The plan consisted of printing Gen 2 tags for use as permits using a Zebra printer. The issued tag's EPC number would be logged in an institution's database. The database would also contain information such as the accompanying vehicle make, model, permit type, etc. This information would then be stored on a handheld reader, such as Symbol's MC 9000-G, and displayed when the tag entered the read field.



Enforcement costs through reliance upon barcodes and line of sight are a major issue for parking departments; it

was estimated that 95% of permits enforcers examine are those of non-violators. A 50% increase in enforcement labor efficiency, which could very well be possible with an RFID system, could save a mid-size public institution such as the University of Arkansas approximately \$160,000 annually.

For more information on this project please contact:

Chris Skrocki, economics undergraduate student (cskrock@gmail.com) or, Craig Thompson, professor of computer science and computer engineering at cwt@ENGR.uark.edu

## Student Profile



### Lei Jiang

Lei Jiang, a graduate student from China is currently pursuing his master's degree in Information Systems from the Sam M. Walton Business College at the University of Arkansas. Lei specializes in working with numbers. He received his Associate Degree in Financial Accounting

in China and a Bachelors degree in Accounting at University of Arkansas.

In addition to his academic endeavors, he has worked at a major Chinese securities company where he learned how to analyze listed companies, run an IT department, and also learned valuable information about accounting.

Lei is graduating in May 2006 and is very interested in ERP (Enterprise

Resource Planning) systems, which was his concentration for his academic studies. Last December he passed SAP's uniform exam and received his certificate as a solution consultant. He is also interested in statistics and analysis tools. He is qualified to take the CPA exam and plans on doing so this summer.

To see Lei's resume and other lab employees resumes' please visit: [itri.uark.edu/rfid](http://itri.uark.edu/rfid)

---

## *Strategic Sponsors*

ACNielsen  
Cisco-Eagle, Inc.  
Deloitte Consulting, LLP  
Hytrol Conveyor Co., Inc.  
Intel Corp.  
Intel Solution Services  
Microsoft Corporation  
Symbol Technologies

## *Business Sponsors*

ABF Freight System, Inc.  
Campbell Soup Co.  
E. & J. Gallo Winery  
Hanna's Candle Co.  
JBHunt Transport Services, Inc.  
Tyson Foods, Inc.  
Wal-Mart Stores, Inc.

## *Lab Sponsors*

Alien Technology  
Avery-Dennison  
epcSolutions, Inc.  
Hugg & Hall  
IBM, Inc.  
Loftware  
Markem  
Moore Wallace  
OATSystems, Inc.  
Omron Electronics LLC  
Paxar  
Printronic  
RFID Global Solution, Inc.  
RFID Journal  
ThingMagic  
Weber Marking Systems  
UPM Raflatac  
Zebra Technologies Corp.  
Zero Mountain



For more information about becoming a sponsor of the RFID Research Center, contact:

Dr. Bill Hardgrave  
Director, RFID Research Center  
Sam M. Walton College of Business  
University of Arkansas  
Fayetteville, AR 72701  
bhardgrave@walton.uark.edu  
(479) 575-6099